

# Australians who demand the best choose Edson.

**20  
YEAR  
WARRANTY**



**EDSON**

Electric Hot Water Systems & Storage Cylinders

• INDUSTRIAL • COMMERCIAL • RESIDENTIAL

**Quality  
Engineered  
Company**

**A-west**  
distributors

Rob Calautti

Unit 15-52 Kent Street CANNINGTON

Ph : 9258 5670 - Mob: 0439 393 353

# Edson Hot Water- A History of Quality

Edson water heaters have been designed, manufactured and sold for well in excess of 40 years by R.Edmonds & Sons. During this time thousands of appliances have been produced and much valuable expertise gained. This expertise is now used to design hot water requirements across many varied industries, for many varied applications. From 9 litres to 10,000 litres in size with either steam, gas or electricity. Edson has the flexibility to help you design the best hot water option for your application, and manufactures it to the highest standard.



## Partners and Projects

Projects with a high emphasis on design input and specific technical requirements are our speciality and Edson has a long tradition of working closely with other quality driven companies. The quality of Edson stainless steel cylinders and our recognition as being considered the best in the business, has led to specification and partnerships with the following

## Features

- 20 years warranty
- Flexible design
- Sizes up to 10,000 litres
- Long life Duplex  
Stainless Steel
- ISO 9002 Approved



### Defence has been a cornerstone of Edson's business

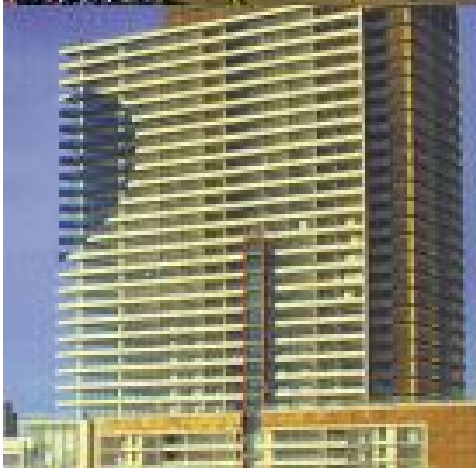
Hot water systems specified on Australian and overseas built naval craft demonstrates confidence in the quality and design principles fundamental to Edson.

With partners such as ADI Limited, Tenix, Forgas Dockyard, and the Singapore and Malaysian navies, Edson has worked with the leaders in the defence industry throughout the Asia Pacific region.

## Manufacturing to suit your requirements

Edson Hot Water systems have been designed specifically for applications such as large cruiseships or naval vessels, non-metallic mine hunting ships, high speed trains, multi-story hotel and apartment developments.

Designing and manufacturing cylinders to the rigorous demands of AS1210 (Australian pressure vessel standard) and with an ISO 9002 quality system, ensures our customers receive only the highest quality cylinders available in Australia.



# STAINLESS

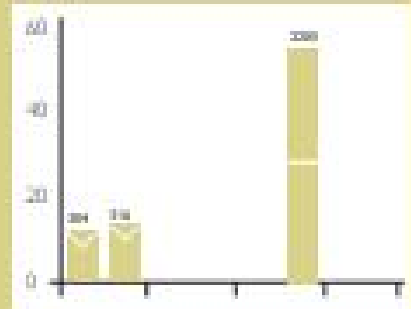
## Not all Stainless Steels are created equal

Water heaters have traditionally been manufactured in enamelled carbon steel and ferritic or austenitic stainless steels. The advantage that stainless steel offers is that neither coating, pressure supporting material, or sacrificial anodes is required. Stainless steel provides both strength and corrosion resistance. The level of this strength and resistance is directly dependant on the grade of stainless steel chosen.

Edson Hot Water chooses to use Grade 2205 Duplex Stainless Steel. This material has the highest available resistance to both pitting corrosion and stress corrosion cracking (the most common faults in lower quality cylinders)

**PRE** = Pitting Resistance Equivalents  
**CPT** = Critical Pitting Temperature

Grade	PRE	CPT
AISI 3168/304	25.5	15
2205	37.0	50



Resistance to stress corrosion cracking

### The hotter, the better

With "2205 Stainless Steel" hot water is not an issue. Temperatures 60°C and above can create problems with lesser grades of stainless steel, but not the 2205 grade, it is capable of storing water up to 96°C without any negative effects.



# EDSON

## Specifications

### Long-Life "Electric" Hot Water Systems

Standard models also manufactured to operate in conjunction with alternative heat sources

Type	5055L	8055L	12555L	16055L	25055L	31555L	40055L	43555L	65055L	80055L	100055L
Storage Capacity (L)	50	80	135	160	258	315	400	435	648	796	1012
Height (mm)	630	990	1340	1770	1320	1570	1830	1200	1700	1940	2420
Diameter (mm)	430	430	430	430	660	660	660	890	890	890	890
Weight (kg)	35	38	45	50	80	92	115	123	142	156	198
Weight filled with water (kg)	85	118	170	210	338	407	515	558	790	952	1210
Current draw (amps)	3x20	3x20	3x20	3x20	3x20	3x20	3x20	3x20	3x20	3x20	3x20
Standard elements (kW)	3x1.8	3x1.8	3x1.8	3x1.8	3x1.8	3x1.8	3x1.8	3x1.8	3x1.8	3x1.8	3x1.8
Initial draw-off in first hour	2%	12%	37%	40%	34%	39%	6%	68%	89%	104%	125%
Recovery with 50°C rise	24%	24%	24%	24%	24%	24%	24%	24%	24%	24%	24%
Max cold water supply (MPa)	680	680	680	680	560	560	560	560	560	560	560
Max working pressure (kPa)	850	850	850	850	700	700	700	700	700	700	700

Standard connections include 25mm inlet and hot outlet. Plus relief valve sockets and drain. Other sizes available.

Max element (kW) Multiple of heating elements ratings available. Price on application

### Long-Life "Storage" Vessels

Standard models for connection to alternative heat sources

Type	25055	31555	40055	43555	65055	80055	100055
Storage Capacity (L)	258	315	400	435	648	796	1012
Height (mm)	1280	1520	1780	1150	1620	1890	2375
Diameter (mm)	660	660	660	890	890	890	890
Weight (kg)	80	92	115	123	142	156	198
Max cold water supply pressure (MPa)	560	560	560	560	560	560	560
Max working pressure (MPa)	700	700	700	700	700	700	700

Includes 25mm high output pressure/temperature relief valve. Standard connections include up to 1x60mm Main Flow and Return points, 50mm hot outlet, 15mm Bsp Female socket (Thermometer) Plus Relief valve socket. Other sizes available price on application.

