

# AIRA LAARS

**A-west**  
distributors

Rob Calautti

Unit 15-52 Kent Street CANNINGTON

Ph : 9258 5670 - Mob: 0439 393 353

## Mightytherm series

### Hydronic Heating Boilers Volume Water Heaters Commercial Pool Heaters



**NO FAILURE OF HEAT EXCHANGER  
RUBBER SEALS.**

With **AIRA** LAARS high efficiency copper tubes pressure expanded into heavy duty glass lined cast iron headers for life long durability.

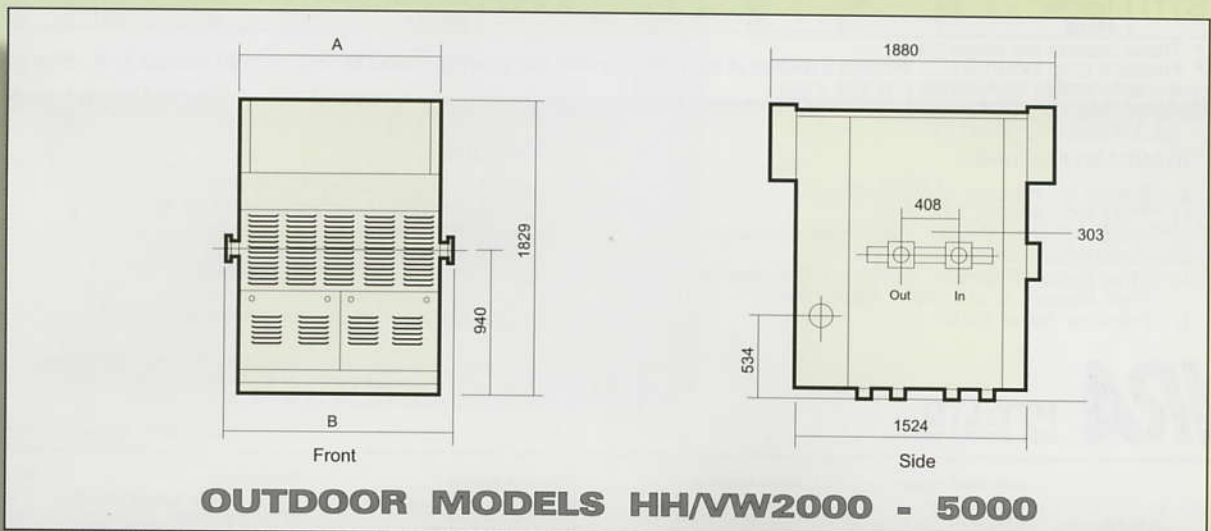
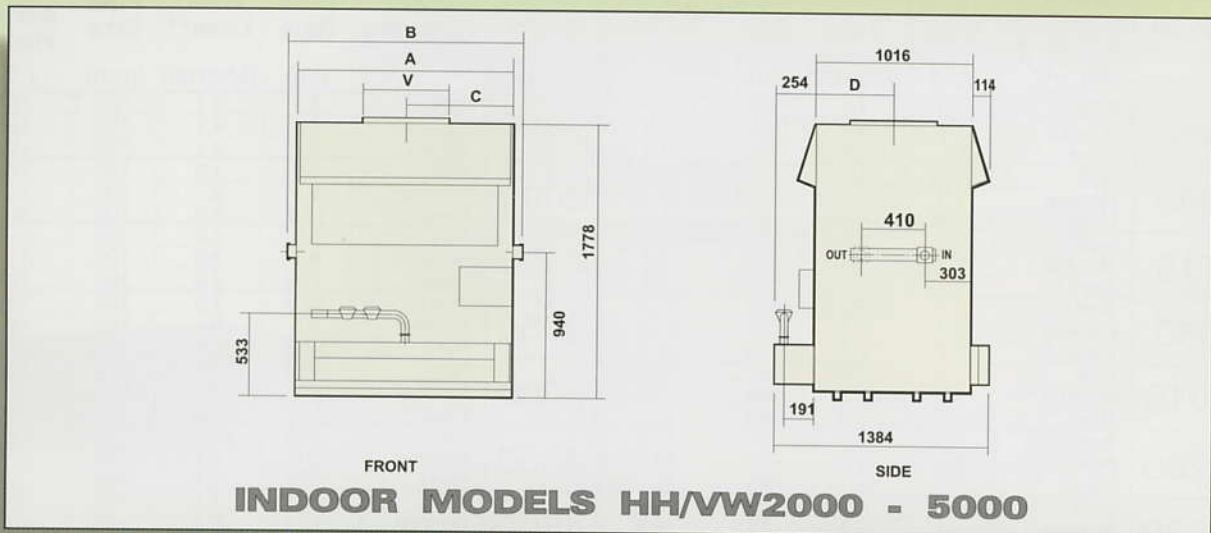
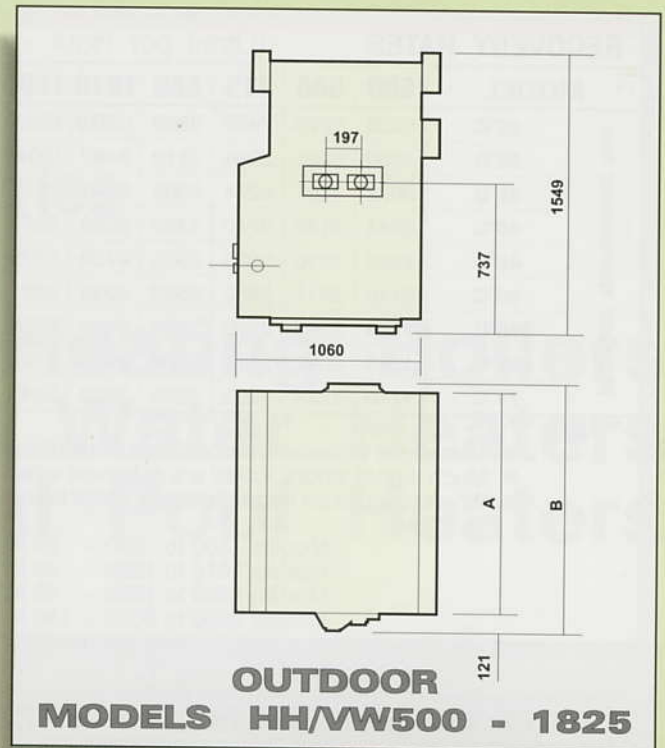
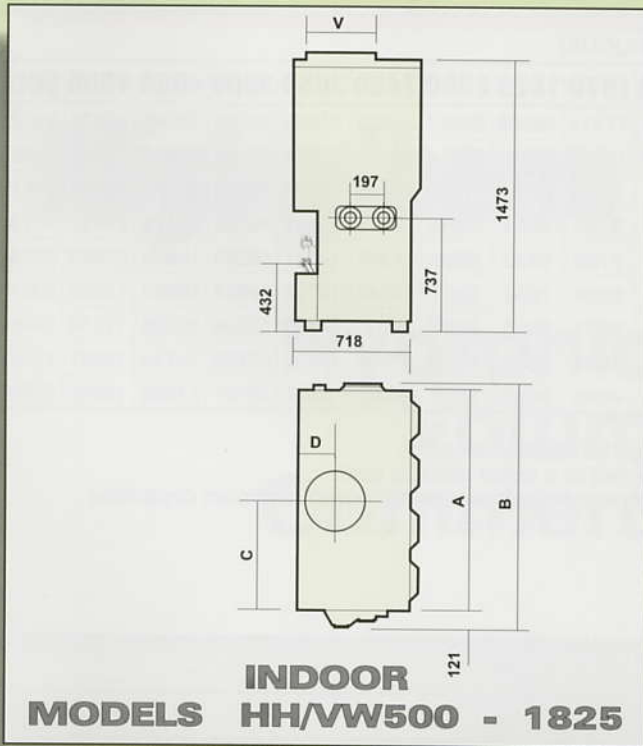


**MADE IN AUSTRALIA**





# Dimensions





# Mightytherm series Volume Water Machines

RECOVERY RATES		(Litres per Hour - Continuous)															
MODEL		500	600	715	850	1010	1200	1430	1670	1825	2000	2450	3050	3500	4050	4500	5000
REQUIRED TEMPERATURE RISE	20°C	5288	6276	7480	8899	10576	12553	14961	17411	19088	20893	25622	31899	36585	42345	47074	52276
	25°C	4230	5021	5984	7119	8460	10043	11969	13929	15270	16714	20498	25519	29268	33876	37659	41821
	35°C	3022	3587	4274	5085	6043	7173	8549	9949	10907	11939	14641	18288	20906	24197	26900	29872
	40°C	2644	3138	3740	4450	5288	6277	7480	8706	9544	10446	12811	15949	18292	21173	23537	26138
	45°C	2350	2790	3325	3955	4700	5579	6649	7738	8483	9286	11388	14177	16260	18820	20922	23234
	50°C	2115	2511	2992	3560	4230	5021	5984	6964	7635	8357	10249	12759	14634	16938	18830	20910
	55°C	1923	2282	2720	3236	3846	4565	5440	6331	6941	7598	9317	11599	13304	15398	17118	19010
	60°C	1763	2092	2493	2966	3525	4184	4987	5804	6363	6964	8541	10632	12195	14115	15691	17425
	75°C	1410	1674	1995	2373	2820	3348	3990	4643	5090	5572	6833	8506	9756	11292	12553	13940

**Note:**

- The above tables show **continuous maximum ratings** for each size heater.
- Much higher 'shock loads' are achieved when connected to a direct storage tank.
- When used as an **instantaneous** water heater, a ring main must be installed having minimum capacities as follows:-
  - Models 500 to 850 - 25 litres
  - Models 1010 to 1200 - 40 litres
  - Models 1430 to 1825 - 65 litres
  - Models 2000 to 5000 - 150 litres

WATER HEATER PUMP REQUIREMENTS											
Model	Water Category	Flow Rate	Head Loss	Pipe Size	Temp. Rise Across Heater	Model	Water Category	Flow Rate	Head Loss**	Pipe Size	Temp. Rise Across Heater
	SOFT 1.0-7.5 NRML 7.6-17 HARD >17	(l/s)	(Metres)	(mm)	(°C)			(l/s)	(Metres)	(mm)	(°C)
500	Soft	2.8	1.5	50	10.4	1825	Soft	5.7	4.1	100	18.6
	Normal	4.3	3.0	50	6.8		Normal	5.7	4.1	100	18.6
	Hard	5.7	4.8	50	5.1		Hard	5.7	4.1	100	18.6
600	Soft	2.8	1.6	50	12.4	2000	Soft	6.3	1.3	100	17.8
	Normal	4.3	3.1	50	8.1		Normal	9.5	2.7	100	11.8
	Hard	5.7	4.9	50	6.1		Hard	12.6	4.6	100	8.9
715	Soft	2.8	1.6	50	14.8	2450	Soft	6.3	1.4	100	21.8
	Normal	4.3	3.4	50	9.7		Normal	9.5	3.0	100	14.0
	Hard	5.7	5.4	50	7.3		Hard	12.6	4.9	100	10.9
850	Soft	2.8	1.7	50	17.7	3050	Soft *	12.6	1.9	100	13.6
	Normal	4.3	3.4	50	11.5		Normal	9.5	3.4	100	18.0
	Hard	5.7	5.5	50	8.7		Hard	12.6	5.5	100	13.6
1010	Soft	2.8	1.2	65	20.9	3500	Soft *	12.6	1.9	100	15.5
	Normal	4.3	2.3	65	13.7		Normal	9.5	3.4	100	20.6
	Hard	5.7	3.6	65	10.3		Hard	12.6	5.8	100	15.5
1200	Soft	4.3	2.4	65	16.2	4050	Soft *	12.6	2.0	100	18.0
	Normal	4.3	2.4	65	16.2		Normal	9.5	3.7	100	23.9
	Hard	5.7	3.7	65	12.2		Hard	12.6	6.1	100	18.0
1430	Soft	4.3	2.5	65	19.3	4500	Soft *	12.6	2.1	100	20.0
	Normal	4.3	2.5	65	19.3		Normal *	11.4	5.2	100	22.1
	Hard	5.7	3.8	65	14.6		Hard	12.6	6.4	100	20.0
1670	Soft	4.3	2.5	65	22.5	5000	Soft *	12.6	2.2	100	22.7
	Normal	4.3	2.5	65	22.5		Normal *	11.4	5.5	100	25.1
	Hard	5.7	3.9	65	16.9		Hard	12.6	6.7	100	22.7

\* These heaters are single pass.  
 \*\* Pressure drop includes loss through 9 metres of pipe and nominal fittings when heater is installed with storage tank. Pipe and are assumed to be 100 mm.

#### STANDARD FEATURES:

- Natural or Propane (LPG) gas.
- 1100 kPa working Pressure.
- Integral Finned Copper Tube Heat Exchanger
- Glass-lined headers
- Flow Switch (Pressure switch on Commercial Pool Heaters & Hot Water Machines)
- Pressure Relief Valve

#### OPTIONS:

- Cupro-nickel Heat Exchanger
- Outdoor Ambient Reset Control Kit
- Remote Alarm
- Modulating control
- 2 or 4 Stage Burner Control

**AIRA** PTY. LTD.  
ACN 005 058 364

Specification subject to change without notice.

Victoria  
144 Colchester Rd.  
KILSYTH 3137 Australia  
Tel: (03) 9728 5566  
Fax: (03) 9761 4732  
email: aira@aira.com.au

New South Wales  
AIRA Pty. Ltd.  
3/46 Seton Road.  
MOOREBANK 2170  
Tel: (02) 9822 8900  
Fax: (02) 9822 8988

South Australia  
AIRA Pty. Ltd.  
104 Coglein Street.  
BROMPTON 5007  
Tel: (08) 8346 5175  
Fax: (08) 8340 1932

Western Australia  
Applied Climate Control (WA) P/L  
40 Sorbonne Cres.  
CANNINGVALE 6155  
Tel: (08) 9455 2466  
Fax: (08) 9455 2599

Queensland  
Applied Climate Control (Qld) P/L  
65 Randall Street  
SLACKS CREEK QLD 4127  
Tel: (07) 3290 3884  
Fax: (07) 3290 3994

New Zealand  
Alakon AIRA Pty. Ltd.  
Unit B, 50 Keeling Rd.  
HENDERSON, AUCKLAND  
Tel: (09) 835 2100  
Fax: (09) 835 2201